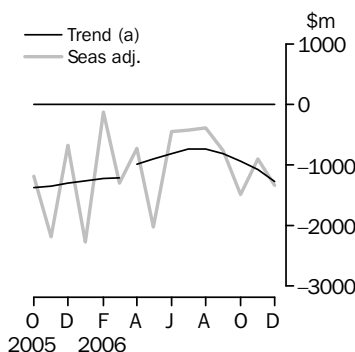


INTERNATIONAL TRADE IN GOODS AND SERVICES

AUSTRALIA

EMBARGO: 11.30AM (CANBERRA TIME) FRI 2 FEB 2007

Balance on goods and services



(a) A trend break of \$150m to April 2006 has been applied.

KEY FIGURES

	October 2006 \$m	November 2006 \$m	December 2006 \$m	Nov 06 to Dec 06 % change
TREND				
Balance on goods and services	-941	-1 074	-1 273	..
Credits (exports of goods & services)	17 849	17 846	17 791	-
Debits (imports of goods & services)	18 790	18 920	19 064	1
SEASONALLY ADJUSTED				
Balance on goods and services	-1 486	-897	-1 336	..
Credits (exports of goods & services)	17 935	17 901	17 781	-1
Debits (imports of goods & services)	19 421	18 799	19 118	2

.. not applicable

- nil or rounded to zero (including null cells)

KEY POINTS

TREND ESTIMATES

- The provisional trend estimate of the balance on goods and services was a deficit of \$1,273m in December 2006, an increase of \$199m on the revised deficit in November.
- Goods and services credits fell \$55m to \$17,791m. Goods and services debits rose \$144m (1%) to \$19,064m.

SEASONALLY ADJUSTED ESTIMATES

- In seasonally adjusted terms, the balance on goods and services was a deficit of \$1,336m in December, an increase of \$439m on the revised deficit in November.
- Goods and services credits fell \$120m (1%) to \$17,781m. Rural goods fell \$92m (4%) and non-rural and other goods fell \$47m. Services credits rose \$19m (1%).
- Goods and services debits rose \$319m to \$19,118m. Capital goods rose \$206m (6%), intermediate and other goods rose \$135m (2%) and consumption goods fell \$29m (1%). Services debits rose \$8m.

ORIGINAL ESTIMATES

- In original terms, the December balance on goods and services was a deficit of \$100m, a decrease of \$1,542m on the revised deficit in November. Goods and services credits rose \$671m (4%) while goods and services debits fell \$871m (4%).
- The 2006 calendar year deficit on goods and services was \$11,645m. The goods deficit was \$12,648m while the services surplus was \$1,003m.

INQUIRIES

For further information about these and related statistics, contact the National Information and Referral Service on 1300 135 070 or Tom Jebbink on Canberra (02) 6252 5540.

NOTES

FORTHCOMING ISSUES

ISSUE	RELEASE DATE
January 2007	6 March 2007
February 2007	3 April 2007
March 2007	4 May 2007
April 2007	31 May 2007
May 2007	4 July 2007
June 2007	1 August 2007



REVISIONS

Revisions were made to incorporate the latest available data relating to merchandise trade and the quarterly Survey of International Trade in Services. In original terms, these revisions have:

- increased the deficit on goods and services for November 2006 by \$40m
- decreased the deficit on goods and services for 2005-06 by \$135m.

CHANGES TO THIS ISSUE

In both the seasonally adjusted and trend data presented in this publication, aggregate sub-totals and totals may not exactly equal the sum of their components due to rounding. The previous process was to generate sub-totals and totals as the sum of the rounded components.

CHANGES TO EXPORT AND IMPORT STATISTICAL CODES

As advised in the previous issue, statistical codes in the Australian Harmonized Export Commodity Classification (AHECC) and the Customs Tariff will be revised with the January 2007 issue of this publication. The changes result from the implementation of an update to the international Harmonized Commodity Description and Coding System. The changes will not impact directly on the presentation of statistics in this publication but will impact on detailed import and export statistics provided via ABS Client Services.

More information about these changes is available from the ABS web site *Information Paper: Changes on 1 January 2007 to Statistical Codes in the AHECC and the Customs Tariff, 2007* (cat. no. 1233.0.55.001). Included with the information paper are correspondences between the codes of the current and the updated versions of the AHECC and the Customs Tariff, and correspondences between the updated versions of the AHECC and the Customs Tariff, and related classifications. The correspondences can be used by clients to understand the impact on statistics.

FEATURE ARTICLE

A feature article on *Australia's International Trade in Services by Partner Country, 2006, Preliminary*, will be released on the ABS web site on 12 February 2007. The article provides preliminary calendar year data for 2006 for Australia's international trade in services with selected major trading partners. As the data is preliminary, care should be exercised in interpreting the data. More comprehensive and updated estimates for 2006 will be published with the March 2007 issue of *International Trade in Goods and Services, Australia* (cat. no. 5368.0).

Susan Linacre
Acting Australian Statistician

CONTENTS

page

Time series data	4
----------------------------	---

ANALYSIS

Analysis and comments	5
---------------------------------	---

TABLES

INTERNATIONAL TRADE IN GOODS AND SERVICES – BALANCE OF PAYMENTS BASIS

1 Goods and services, summary, seasonally adjusted and trend estimates	9
2 Goods and services, summary, original	10
3 Goods credits, original	11
4 Goods debits, original	12
5 Goods credits, seasonally adjusted	13
6 Goods debits, seasonally adjusted	14
7 Goods credits, trend estimates	15
8 Goods debits, trend estimates	16
9 Services, summary, original	17
10 Services, summary, seasonally adjusted and trend estimates	18
11 Services, original, quarterly	19

INTERNATIONAL MERCHANDISE TRADE – RECORDED TRADE BASIS

12 International merchandise exports, by commodity	20
13 International merchandise imports, by commodity	23
14 International merchandise trade, by country and country groups	26
15 International merchandise trade, by state	27

OTHER TABLES

16 Period average exchange rates per Australian dollar	28
---	----

OTHER INFORMATION

Explanatory Notes	29
Abbreviations	32
Appendix - Related articles	33

TIME SERIES DATA

TIME SERIES DATA

Data available free on the ABS web site <<http://www.abs.gov.au>> include longer time series of tables in this publication and additional spreadsheets and data cubes below:

31 Merchandise exports by Broad Economic Category (BEC)

32 Merchandise exports by industry of origin (ANZSIC)

33 Merchandise imports by Broad Economic Category (BEC)

34 Merchandise imports by Balance of Payments Broad Economic Category (BoPBEC)

35 Merchandise imports by industry of origin (ANZSIC)

36 Merchandise exports, state by country and country groups

37 Merchandise imports, state by country and country groups

90 Monthly forward seasonal adjustment factors

Trade in Services data cubes are usually updated on an annual basis - with the March issue of 5368.0 for calendar year and with the September issue for financial year.

Financial year (cat. no. 5368.0.55.003)

1 International trade in services, credits, state by financial year

2 International trade in services, credits, financial year by state

3 International trade in services, debits, state by financial year

4 International trade in services, debits, financial year by state

5 International trade in services, credits, financial year by country and service

6 International trade in services, credits, service by financial year and by country

7 International trade in services, debits, financial year by country and service

8 International trade in services, debits, service by financial year and by country

9 International trade in services, financial year by detailed service

Calendar year (cat. no. 5368.0.55.004)

1 International trade in services, credits, state by calendar year

2 International trade in services, credits, calendar year by state

3 International trade in services, debits, state by calendar year

4 International trade in services, debits, calendar year by state

5 International trade in services, credits, calendar year by country and service

6 International trade in services, credits, service by calendar year and by country

7 International trade in services, debits, calendar year by country and service

8 International trade in services, debits, service by calendar year and by country

9 International trade in services, calendar year by detailed service

ANALYSIS AND COMMENTS

BALANCE ON GOODS AND SERVICES

The trend estimate of the balance on goods and services in December 2006 was a deficit of \$1,273m, an increase of \$199m on the deficit in November.

In seasonally adjusted terms, the balance on goods and services in December 2006 was a deficit of \$1,336m, an increase of \$439m on the deficit in November.

The sum of the seasonally adjusted balances for the three months to December 2006 was a deficit of \$3,719m, an increase of \$2,140m on the deficit of \$1,579m for the three months to September 2006. However, if the seasonal factors used in compiling quarterly Balance of Payments are applied, the December quarter 2006 deficit was \$3,554m, an increase of \$2,089m on the revised September quarter 2006 deficit of \$1,465m.

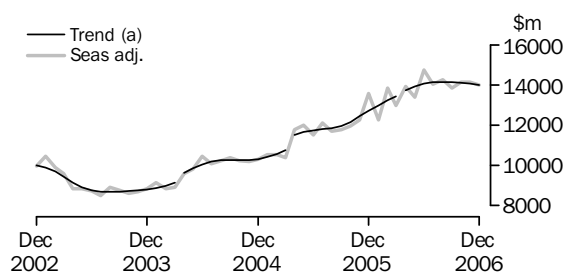
EXPORTS OF GOODS AND SERVICES

The trend estimate of goods and services credits fell \$55m between November and December to \$17,791m.

In seasonally adjusted terms, goods and services credits fell \$120m (1%) to \$17,781m. Non-rural goods fell \$237m (2%), rural goods fell \$92m (4%) while other goods rose \$190m (23%). Services credits rose \$19m (1%).

Exports of goods

GOODS CREDITS



(a) Trend breaks of \$300m to April 2004, \$600m to April 2005 and \$150m to April 2006 have been applied.

RURAL GOODS

The trend estimate of rural goods exports fell \$14m (1%) to \$2,189m.

In seasonally adjusted terms, exports of rural goods fell \$92m (4%) to \$2,130m.

The main components contributing to the fall in the seasonally adjusted estimates were:

- other rural, down \$70m (7%)
- cereal grains and cereal preparations, down \$33m (9%).

Partly offsetting these effects was wool and sheepskins, up \$12m (5%).

In original terms, exports of rural goods rose \$15m (1%) to \$2,228m.

ANALYSIS AND COMMENTS *continued*

Exports of goods *continued*

NON-RURAL GOODS

The trend estimate of non-rural goods exports fell \$29m to \$10,891m.

In seasonally adjusted terms, exports of non-rural goods fell \$237m (2%) to \$10,843m.

The main components contributing to the fall in the seasonally adjusted estimates were:

- other non-rural, down \$177m (13%)
- other manufactures, down \$138m (10%)
- coal, coke and briquettes, down \$31m (2%).

Partly offsetting these effects were:

- metals (excl. gold), up \$87m (7%)
- metal ores and minerals, up \$19m (1%).

In original terms, exports of non-rural goods rose \$526m (5%) to \$11,514m.

OTHER GOODS

The trend estimate of other goods exports fell \$26m (3%) to \$923m.

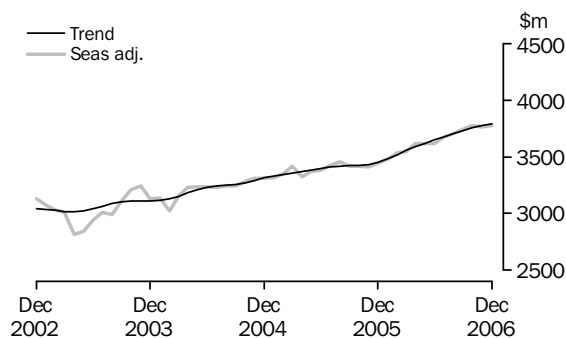
In seasonally adjusted terms, exports of other goods rose \$190m (23%) to \$1,028m.

The main component contributing to the rise in the seasonally adjusted series was non-monetary gold, up \$223m (33%), partly offset by goods for processing, down \$38m (73%).

In original terms, exports of other goods rose \$186m (22%) to \$1,022m.

Exports of services

SERVICES CREDITS



In trend terms, services credits rose \$14m to \$3,788m.

Seasonally adjusted, services credits rose \$19m (1%) to \$3,780m.

All components contributed to the rise in the seasonally adjusted series where the main contributor was travel services, up \$14m (1%).

Seasonally adjusted, tourism related services credits rose \$6m to \$2,411m.

IMPORTS OF GOODS AND SERVICES

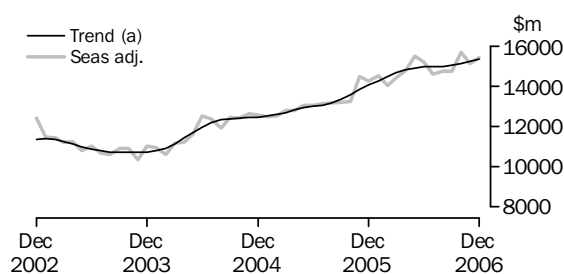
The trend estimate of goods and services debits rose \$144m between November and December to \$19,064m.

In seasonally adjusted terms, goods and services debits rose \$319m (2%) to \$19,118m. Capital goods rose \$206m (6%), intermediate and other merchandise goods rose \$100m (2%), other goods rose \$35m (7%) while consumption goods fell \$29m (1%). Services debits rose \$8m.

Preliminary analysis shows that goods imports volumes, in seasonally adjusted terms, increased about 7.3% during the December quarter 2006. The original Chain Laspeyres price index fell about 3.1% and the implicit price deflator fell about 2.7%. The final volume and price outcomes will be published in the December quarter 2006 issue of *Balance of Payments and International Investment Position, Australia* (cat. no. 5302.0).

Imports of goods

GOODS DEBITS



(a) Trend estimates exclude abnormal imports of aircraft in December 2002.

CONSUMPTION GOODS

The trend estimate of imports of consumption goods rose \$43m (1%) to \$4,648m.

In seasonally adjusted terms, imports of consumption goods fell \$29m (1%) to \$4,629m.

The main component contributing to the fall in the seasonally adjusted estimates was food and beverages, mainly for consumption, down \$48m (7%).

In original terms, imports of consumption goods fell \$798m (16%) to \$4,344m.

CAPITAL GOODS

The trend estimate of imports of capital goods rose \$59m (2%) to \$3,479m.

In seasonally adjusted terms, imports of capital goods rose \$206m (6%) to \$3,568m.

The components contributing to the rise in the seasonally adjusted estimates were:

- civil aircraft, up \$222m
- ADP equipment, up \$32m (6%).

Partly offsetting these effects were:

- machinery and industrial equipment, down \$38m (3%)
- capital goods n.e.s., down \$14m (3%).

In original terms, imports of capital goods fell \$77m (2%) to \$3,546m.

ANALYSIS AND COMMENTS *continued*

Imports of goods continued

INTERMEDIATE AND OTHER MERCHANDISE GOODS

The trend estimate of imports of intermediate and other merchandise goods rose \$36m (1%) to \$6,648m.

In seasonally adjusted terms, imports of intermediate and other merchandise goods rose \$100m (2%) to \$6,702m.

The main components contributing to the rise in the seasonally adjusted estimates were:

- fuels and lubricants, up \$352m (23%), with volumes of crude oil imports up 39%
- other merchandise goods, up \$67m (75%)
- processed industrial supplies n.e.s., up \$23m (2%)
- primary industrial supplies n.e.s., up \$22m (19%).

Partly offsetting these effects were:

- organic and inorganic chemicals, down \$317m (54%)
- iron and steel, down \$79m (21%).

In original terms, intermediate and other merchandise goods fell \$326m (5%) to \$6,360m.

OTHER GOODS

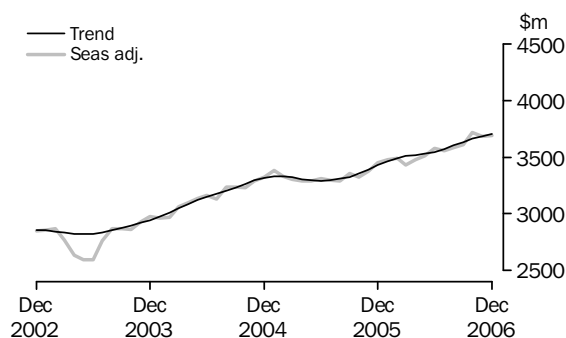
The trend estimate of imports of other goods fell \$11m (2%) to \$588m.

In both original and seasonally adjusted terms, other goods imports rose \$35m (7%) to \$529m.

The main component contributing to the rise in the estimates was goods for processing, up \$90m, partly offset by non-monetary gold, down \$55m (17%).

Imports of services

SERVICES DEBITS



In trend terms, services debits rose \$17m to \$3,701m.

Seasonally adjusted, services debits rose \$8m to \$3,690m.

The main components that contributed to the rise in the seasonally adjusted estimates were:

- travel services, up \$16m (1%)
- other services, up \$5m.

Partly offsetting these effects was transportation services, down \$15m (1%).

Seasonally adjusted, tourism related services debits rose \$56m (3%) to \$1,973m.

GOODS AND SERVICES (a), Summary: Seasonally Adjusted and Trend Estimates

Months	BALANCE	CREDITS					DEBITS					
	On goods and services	Total goods and services	Total goods	Rural goods(b)	Non-rural and other goods(b)	Total services	Total goods and services	Total goods	Consumption goods	Capital goods	Intermediate and other goods	Total services
	\$m	\$m	\$m	\$m	\$m	\$m	\$m	\$m	\$m	\$m	\$m	\$m
SEASONALLY ADJUSTED												
2005												
October	-1 189	15 381	11 962	2 038	9 923	3 419	-16 570	-13 249	-3 842	-3 341	-6 065	-3 321
November	-2 182	15 677	12 265	2 015	10 250	3 412	-17 859	-14 484	-4 353	-3 643	-6 488	-3 374
December	-677	17 015	13 570	2 153	11 417	3 444	-17 691	-14 239	-4 293	-3 527	-6 419	-3 452
2006												
January	-2 270	15 739	12 263	2 160	10 103	3 476	-18 008	-14 534	-4 241	-3 668	-6 624	-3 474
February	-129	17 394	13 853	2 122	11 731	3 540	-17 523	-14 030	-4 114	-3 157	-6 759	-3 493
March	-1 301	16 531	12 988	2 236	10 751	3 543	-17 832	-14 404	-4 202	-3 599	-6 602	-3 428
April	-729	17 523	13 903	2 151	11 752	3 620	-18 252	-14 777	-4 384	-3 339	-7 054	-3 475
May	-2 020	17 003	13 385	2 134	11 251	3 618	-19 023	-15 510	-4 358	-3 433	-7 719	-3 513
June	-444	18 340	14 726	2 133	12 592	3 614	-18 784	-15 207	-4 413	-3 394	-7 401	-3 577
July	-426	17 728	14 048	2 228	11 820	3 680	-18 154	-14 596	-4 393	-3 049	-7 154	-3 558
August	-392	17 953	14 248	2 245	12 003	3 705	-18 345	-14 763	-4 437	-3 246	-7 080	-3 582
September	-761	17 584	13 839	2 219	11 620	3 745	-18 345	-14 732	-4 377	-3 295	-7 060	-3 613
October	-1 486	17 935	14 160	2 213	11 946	3 775	-19 421	-15 704	-4 660	-3 464	-7 581	-3 717
November	-897	17 901	14 140	2 222	11 918	3 761	-18 799	-15 116	-4 658	-3 362	-7 096	-3 682
December	-1 336	17 781	14 002	2 130	11 871	3 780	-19 118	-15 428	-4 629	-3 568	-7 231	-3 690
TREND ESTIMATES												
2005												
October	-1 368	15 574	12 148	2 045	10 103	3 425	-16 942	-13 586	-4 120	-3 312	-6 155	-3 355
November	-1 350	15 870	12 437	2 069	10 367	3 433	-17 220	-13 829	-4 158	-3 426	-6 245	-3 392
December	-1 303	16 182	12 729	2 104	10 625	3 453	-17 485	-14 056	-4 190	-3 500	-6 365	-3 429
2006												
January	-1 260	16 476	12 993	2 136	10 857	3 483	-17 736	-14 273	-4 219	-3 524	-6 530	-3 463
February	-1 229	16 741	13 222	2 157	11 065	3 519	-17 970	-14 481	-4 245	-3 502	-6 734	-3 489
March	-1 204	16 973	13 417	2 165	11 252	3 556	-18 177	-14 670	-4 274	-3 450	-6 946	-3 507
April	-992	17 335	13 747	2 167	11 579	3 588	-18 327	-14 809	-4 301	-3 389	-7 119	-3 518
May	-903	17 532	13 914	2 171	11 743	3 618	-18 434	-14 906	-4 334	-3 336	-7 236	-3 528
June	-809	17 700	14 053	2 182	11 872	3 647	-18 509	-14 964	-4 376	-3 293	-7 296	-3 545
July	-741	17 809	14 133	2 197	11 935	3 676	-18 550	-14 979	-4 415	-3 269	-7 296	-3 570
August	-734	17 853	14 147	2 210	11 937	3 705	-18 587	-14 986	-4 453	-3 272	-7 261	-3 601
September	-806	17 858	14 126	2 216	11 910	3 732	-18 664	-15 032	-4 500	-3 308	-7 224	-3 632
October	-941	17 849	14 093	2 213	11 881	3 755	-18 790	-15 129	-4 554	-3 363	-7 213	-3 661
November	-1 074	17 846	14 072	2 203	11 869	3 774	-18 920	-15 236	-4 605	-3 420	-7 211	-3 684
December	-1 273	17 791	14 003	2 189	11 814	3 788	-19 064	-15 362	-4 648	-3 479	-7 235	-3 701

(a) For sign conventions, see paragraph 9 of the Explanatory Notes.
 (b) For all time periods, estimates for sugar, sugar preparations and honey are included in Non-rural and other goods.

(c) A trend break of \$150m has been applied to Non-rural and other goods credits and related aggregates in April 2006.

GOODS AND SERVICES (a), Summary: Original

	BALANCE	CREDITS					DEBITS					
	<i>On goods and services</i>	<i>Total goods and services</i>	<i>Total goods</i>	<i>Rural goods(b)</i>	<i>Non-rural and other goods(b)</i>	<i>Total services</i>	<i>Total goods and services</i>	<i>Total goods</i>	<i>Consumption goods</i>	<i>Capital goods</i>	<i>Inter-mediate and other goods</i>	<i>Total services</i>
FINANCIAL YEAR												
2003-04	-21 509	147 205	109 459	24 577	84 882	37 746	-168 714	-133 018	-42 917	-32 118	-57 983	-35 696
2004-05	-22 626	167 562	127 867	25 687	102 180	39 695	-190 188	-150 873	-47 143	-35 967	-67 763	-39 315
2005-06	-14 469	196 325	154 425	25 312	129 113	41 900	-210 794	-169 716	-50 322	-39 996	-79 398	-41 078
MONTHS												
2005												
October	-936	16 232	12 685	2 109	10 576	3 547	-17 168	-13 748	-4 221	-3 437	-6 090	-3 420
November	-2 986	15 697	12 214	2 020	10 194	3 483	-18 683	-15 415	-4 852	-3 934	-6 629	-3 268
December	80	17 576	14 142	2 252	11 890	3 434	-17 496	-13 877	-4 128	-3 556	-6 193	-3 619
2006												
January	-2 781	14 394	10 941	1 818	9 123	3 453	-17 175	-13 562	-3 806	-3 267	-6 489	-3 613
February	303	16 098	12 484	2 025	10 459	3 614	-15 795	-12 740	-3 630	-2 677	-6 433	-3 055
March	-953	16 963	13 313	2 329	10 984	3 650	-17 916	-14 581	-4 128	-3 541	-6 912	-3 335
April	242	17 371	13 700	2 148	11 552	3 671	-17 129	-13 785	-3 944	-3 111	-6 730	-3 344
May	-1 997	17 223	13 776	2 268	11 508	3 447	-19 220	-15 868	-4 267	-3 636	-7 965	-3 352
June	-775	18 195	14 861	2 167	12 694	3 334	-18 970	-15 314	-4 288	-3 651	-7 375	-3 656
July	117	18 205	14 481	2 196	12 285	3 724	-18 088	-14 403	-4 385	-3 022	-6 996	-3 685
August	-815	18 197	14 420	2 254	12 166	3 777	-19 012	-15 463	-4 763	-3 388	-7 312	-3 549
September	-1 384	17 774	14 168	2 266	11 902	3 606	-19 158	-15 234	-4 806	-3 313	-7 115	-3 924
October	-1 860	18 684	14 764	2 278	12 486	3 920	-20 544	-16 683	-5 270	-3 649	-7 764	-3 861
November	-1 642	17 871	14 037	2 213	11 824	3 834	-19 513	-15 945	-5 142	-3 623	-7 180	-3 568
December	-100	18 542	14 764	2 228	12 536	3 778	-18 642	-14 779	-4 344	-3 546	-6 889	-3 863
FINANCIAL YEAR TO DATE												
6 months ended												
December												
2005	-8 508	96 081	75 350	12 557	62 793	20 731	-104 589	-83 866	-26 259	-20 113	-37 494	-20 723
2006	-5 684	109 273	86 634	13 435	73 199	22 639	-114 957	-92 507	-28 710	-20 541	-43 256	-22 450

(a) For sign conventions, see paragraph 9 of the Explanatory Notes.

(b) For all time periods, estimates for sugar, sugar preparations and honey are included in Non-rural and other goods.

							6 MONTHS ENDED		Change
							DECEMBER		
	2003-04	2004-05	2005-06	Oct 2006	Nov 2006	Dec 2006	2005	2006	
	\$m	\$m	\$m	\$m	\$m	\$m	\$m	%	
Total goods credits	109 459	127 867	154 425	14 764	14 037	14 764	75 350	86 634	15.0
<i>Rural goods</i>	24 577	25 687	25 312	2 278	2 213	2 228	12 557	13 435	7.0
Meat and meat preparations	5 758	6 937	6 709	670	696	674	3 452	3 840	11.2
Cereal grains and cereal preparations	5 093	5 159	4 852	376	322	317	2 106	2 457	16.7
Wool and sheepskins	2 778	2 838	2 544	262	255	285	1 258	1 411	12.2
Other rural (a)	10 948	10 753	11 207	970	940	952	5 741	5 727	-0.2
<i>Non-rural goods</i>	76 908	94 328	118 164	11 437	10 988	11 514	58 483	67 223	14.9
Metal ores and minerals	14 843	19 854	28 936	3 318	2 901	3 270	13 600	18 050	32.7
Coal, coke and briquettes	11 002	17 236	24 353	1 864	1 785	1 841	12 273	11 296	-8.0
Other mineral fuels	8 777	11 151	13 220	1 365	1 180	1 386	6 890	8 236	19.5
Metals (excl. non-monetary gold)	7 757	8 668	11 278	1 211	1 185	1 333	4 898	7 128	45.5
Machinery	6 837	7 488	8 087	703	680	766	4 191	4 363	4.1
Transport equipment	5 155	4 943	5 316	460	414	463	2 934	2 439	-16.9
Other manufactures	13 279	14 043	14 926	1 339	1 463	1 320	7 691	8 235	7.1
Other non-rural (incl. sugar and beverages)	9 258	10 945	12 048	1 177	1 380	1 135	6 006	7 476	24.5
<i>Other goods</i>	7 974	7 852	10 949	1 049	836	1 022	4 310	5 976	38.7
Goods for processing	97	241	368	5	52	14	37	185	400.0
Repairs on goods	75	67	74	5	6	7	43	40	-7.0
Goods procured in ports by carriers	771	1 072	1 420	103	110	110	670	711	6.1
Non-monetary gold	7 031	6 472	9 087	936	668	891	3 560	5 040	41.6

(a) For all time periods, estimates for sugar, sugar preparations and honey are included in Other non-rural.

GOODS DEBITS (a): Original

							6 MONTHS ENDED		Change
							DECEMBER		
	2003-04	2004-05	2005-06	Oct 2006	Nov 2006	Dec 2006	2005	2006	
	\$m	\$m	\$m	\$m	\$m	\$m	\$m	\$m	%
Total goods debits	-133 018	-150 873	-169 716	-16 683	-15 945	-14 779	-83 866	-92 507	10.3
<i>Consumption goods</i>	-42 917	-47 143	-50 322	-5 270	-5 142	-4 344	-26 259	-28 710	9.3
Food and beverages, mainly for consumption	-5 167	-5 767	-6 170	-650	-761	-646	-3 201	-3 735	16.7
Household electrical items	-3 793	-4 024	-4 291	-540	-522	-381	-2 293	-2 624	14.4
Non-industrial transport equipment	-12 325	-13 003	-13 589	-1 327	-1 301	-1 270	-6 972	-7 541	8.2
Textiles, clothing and footwear	-5 078	-5 811	-6 365	-611	-573	-473	-3 201	-3 487	8.9
Toys, books and leisure goods	-3 594	-3 740	-4 055	-483	-433	-295	-2 249	-2 380	5.8
Consumption goods n.e.s.	-12 960	-14 798	-15 852	-1 659	-1 552	-1 279	-8 343	-8 943	7.2
<i>Capital goods</i>	-32 118	-35 967	-39 996	-3 649	-3 623	-3 546	-20 113	-20 541	2.1
Machinery and industrial equipment	-11 069	-13 409	-14 328	-1 427	-1 433	-1 349	-7 283	-7 944	9.1
ADP equipment	-5 138	-5 761	-6 073	-618	-527	-555	-2 934	-3 280	11.8
Telecommunications equipment	-4 105	-4 568	-5 334	-476	-559	-447	-2 569	-2 805	9.2
Civil aircraft	-3 061	-2 496	-2 967	-80	-24	-246	-1 616	-755	-53.3
Industrial transport equipment n.e.s.	-4 139	-4 981	-5 495	-511	-566	-500	-2 781	-2 846	2.3
Capital goods n.e.s.	-4 606	-4 752	-5 799	-537	-514	-449	-2 930	-2 911	-0.6
<i>Intermediate and other merchandise goods</i>	-54 266	-63 730	-72 722	-6 837	-6 686	-6 360	-34 985	-39 513	12.9
Food and beverages, mainly for industry	-625	-659	-651	-69	-77	-90	-327	-434	32.7
Primary industrial supplies n.e.s.	-1 079	-1 052	-1 193	-172	-113	-141	-554	-777	40.3
Fuels and lubricants	-9 918	-14 720	-21 014	-1 763	-1 559	-1 911	-9 223	-10 748	16.5
Parts for transport equipment	-6 547	-7 008	-7 314	-765	-747	-620	-3 646	-4 224	15.9
Parts for ADP equipment	-1 812	-1 787	-1 857	-149	-146	-151	-878	-933	6.3
Other parts for capital goods	-8 548	-9 485	-10 154	-986	-1 014	-912	-5 087	-5 731	12.7
Organic and inorganic chemicals	-3 047	-3 622	-4 134	-378	-492	-272	-1 998	-2 150	7.6
Paper and paperboard	-2 242	-2 313	-2 302	-207	-208	-165	-1 194	-1 219	2.1
Textile yarn and fabrics	-1 574	-1 452	-1 361	-120	-124	-95	-680	-709	4.3
Iron and steel	-2 026	-3 008	-3 239	-343	-356	-274	-1 723	-1 781	3.4
Plastics	-2 177	-2 428	-2 517	-256	-269	-244	-1 247	-1 476	18.4
Processed industrial supplies n.e.s.	-13 437	-15 142	-15 856	-1 533	-1 492	-1 329	-7 858	-8 626	9.8
Other merchandise goods	-1 234	-1 054	-1 130	-96	-89	-156	-570	-705	23.7
<i>Other goods</i>	-3 717	-4 033	-6 676	-927	-494	-529	-2 509	-3 743	49.2
Goods for processing	-64	-243	-445	-1	-1	-91	-79	-300	279.7
Repairs on goods	-219	-182	-115	-17	-8	-7	-71	-76	7.0
Goods procured in ports by carriers	-802	-1 049	-1 406	-161	-161	-162	-693	-912	31.6
Non-monetary gold	-2 632	-2 559	-4 710	-748	-324	-269	-1 666	-2 455	47.4

(a) For sign conventions, see paragraph 9 of the Explanatory Notes.

GOODS CREDITS: Seasonally Adjusted

	Mar 2006	Apr 2006	May 2006	Jun 2006	Jul 2006	Aug 2006	Sep 2006	Oct 2006	Nov 2006	Dec 2006
	\$m	\$m	\$m	\$m	\$m	\$m	\$m	\$m	\$m	\$m
Total goods credits	12 988	13 903	13 385	14 726	14 048	14 248	13 839	14 160	14 140	14 002
<i>Rural goods</i>	2 236	2 151	2 134	2 133	2 228	2 245	2 219	2 213	2 222	2 130
Meat and meat preparations	573	565	553	580	582	614	607	625	639	637
Cereal grains and cereal preparations	479	421	470	403	476	510	486	406	370	337
Wool and sheepskins	235	243	190	216	231	201	223	237	234	246
Other rural (a)	949	922	921	935	938	919	903	946	980	910
<i>Non-rural goods</i>	9 869	10 381	10 108	11 179	10 808	10 934	10 650	10 906	11 080	10 843
Metal ores and minerals	2 294	2 617	2 694	3 223	2 899	2 882	2 849	3 043	2 996	3 015
Coal, coke and briquettes	2 085	2 048	1 934	1 983	1 965	1 991	1 825	1 749	1 829	1 798
Other mineral fuels	1 084	1 189	967	1 225	1 300	1 272	1 267	1 377	1 244	1 256
Metals (excl. non-monetary gold)	975	1 044	1 148	1 223	1 176	1 188	1 128	1 211	1 196	1 283
Machinery	698	680	678	713	707	705	696	687	663	671
Transport equipment	443	442	407	419	308	418	357	436	398	381
Other manufactures	1 248	1 314	1 149	1 279	1 344	1 307	1 303	1 290	1 417	1 279
Other non-rural (incl. sugar and beverages)	1 042	1 047	1 132	1 113	1 108	1 170	1 225	1 113	1 337	1 160
<i>Other goods</i>	883	1 371	1 143	1 414	1 012	1 069	970	1 040	838	1 028
Goods for processing (b)	58	80	90	66	67	11	36	5	52	14
Repairs on goods (b)	6	5	6	6	7	6	9	5	6	7
Goods procured in ports by carriers	135	132	131	131	118	133	119	94	112	116
Non-monetary gold (b)	684	1 154	916	1 211	820	919	806	936	668	891

(a) For all time periods, estimates for sugar, sugar preparations and honey are included in Other non-rural.

(b) This component is not seasonally adjusted.

GOODS DEBITS (a): Seasonally Adjusted

	Mar 2006	Apr 2006	May 2006	Jun 2006	Jul 2006	Aug 2006	Sep 2006	Oct 2006	Nov 2006	Dec 2006
	\$m	\$m	\$m	\$m	\$m	\$m	\$m	\$m	\$m	\$m
Total goods debits	-14 404	-14 777	-15 510	-15 207	-14 596	-14 763	-14 732	-15 704	-15 116	-15 428
<i>Consumption goods</i>	-4 202	-4 384	-4 358	-4 413	-4 393	-4 437	-4 377	-4 660	-4 658	-4 629
Food and beverages, mainly for consumption	-516	-538	-541	-537	-554	-560	-565	-573	-663	-615
Household electrical items	-380	-404	-379	-372	-358	-382	-379	-433	-398	-390
Non-industrial transport equipment	-1 100	-1 132	-1 163	-1 214	-1 170	-1 235	-1 147	-1 310	-1 271	-1 282
Textiles, clothing and footwear	-539	-564	-551	-565	-560	-555	-560	-575	-580	-580
Toys, books and leisure goods	-344	-373	-355	-350	-344	-346	-351	-344	-350	-354
Consumption goods n.e.s.	-1 324	-1 373	-1 369	-1 376	-1 407	-1 359	-1 374	-1 425	-1 397	-1 408
<i>Capital goods</i>	-3 599	-3 339	-3 433	-3 394	-3 049	-3 246	-3 295	-3 464	-3 362	-3 568
Machinery and industrial equipment	-1 277	-1 288	-1 205	-1 304	-1 205	-1 231	-1 211	-1 342	-1 312	-1 274
ADP equipment	-527	-512	-470	-518	-533	-525	-532	-607	-561	-593
Telecommunications equipment	-487	-496	-452	-453	-450	-388	-458	-453	-464	-454
Civil aircraft(b)	-255	-100	-232	-189	-55	-232	-118	-80	-24	-246
Industrial transport equipment n.e.s.	-584	-447	-432	-439	-320	-447	-493	-514	-524	-538
Capital goods n.e.s.	-468	-496	-642	-490	-486	-422	-482	-467	-477	-463
<i>Intermediate and other merchandise goods</i>	-6 055	-6 261	-6 773	-6 653	-6 408	-6 625	-6 468	-6 654	-6 602	-6 702
Food and beverages, mainly for industry	-53	-57	-57	-57	-46	-78	-69	-73	-79	-97
Primary industrial supplies n.e.s.(c)	-108	-105	-101	-140	-96	-129	-103	-182	-113	-135
Fuels and lubricants(b)	-1 885	-1 776	-2 311	-2 178	-1 808	-1 992	-1 715	-1 763	-1 559	-1 911
Parts for transport equipment	-632	-628	-662	-629	-666	-687	-688	-721	-690	-688
Parts for ADP equipment	-163	-156	-161	-166	-145	-157	-175	-153	-154	-156
Other parts for capital goods	-846	-931	-874	-883	-896	-901	-925	-949	-953	-963
Organic and inorganic chemicals(c)	-312	-363	-361	-293	-374	-344	-358	-381	-585	-268
Paper and paperboard	-184	-209	-192	-196	-201	-202	-205	-184	-190	-189
Textile yarn and fabrics	-114	-114	-116	-115	-117	-114	-117	-115	-118	-115
Iron and steel	-266	-241	-234	-256	-255	-267	-291	-330	-380	-301
Plastics	-199	-214	-214	-228	-237	-242	-236	-247	-247	-257
Processed industrial supplies n.e.s.	-1 221	-1 362	-1 391	-1 384	-1 413	-1 427	-1 460	-1 459	-1 443	-1 466
Other merchandise goods(b)	-73	-106	-99	-127	-155	-85	-124	-96	-89	-156
<i>Other goods</i>	-547	-793	-946	-748	-746	-455	-592	-927	-494	-529
Goods for processing(b)	-111	-1	-128	-45	-139	-67	-1	-1	-1	-91
Repairs on goods(b)	-6	-7	-13	-7	-14	-13	-17	-17	-8	-7
Goods procured in ports by carriers(b)	-112	-126	-126	-125	-142	-142	-144	-161	-161	-162
Non-monetary gold(d)	-318	-659	-679	-571	-451	-233	-430	-748	-324	-269

(a) For sign conventions, see paragraph 9 of the Explanatory Notes.

(b) These components are not seasonally adjusted.

(c) In using these seasonally adjusted series, care should be exercised because of the difficulties associated with reliably estimating the seasonal pattern.

(d) From October 1995, this component is not seasonally adjusted.

	Mar 2006	Apr 2006	May 2006	Jun 2006	Jul 2006	Aug 2006	Sep 2006	Oct 2006	Nov 2006	Dec 2006
	\$m	\$m	\$m	\$m	\$m	\$m	\$m	\$m	\$m	\$m
Total goods credits	13 417	13 747	13 914	14 053	14 133	14 147	14 126	14 093	14 072	14 003
<i>Rural goods</i>	2 165	2 167	2 171	2 182	2 197	2 210	2 216	2 213	2 203	2 189
Meat and meat preparations	562	564	569	577	588	601	613	624	633	639
Cereal grains and cereal preparations	443	448	454	463	467	463	447	424	396	371
Wool and sheepskins	220	221	219	216	216	218	224	230	236	240
Other rural (a)	939	935	929	925	926	928	932	935	938	939
<i>Non-rural goods</i>	10 155	10 417	10 546	10 679	10 783	10 854	10 891	10 905	10 920	10 891
Metal ores and minerals	2 514	(b)2 726	2 801	2 872	2 922	2 949	2 961	2 969	2 983	2 982
Coal, coke and briquettes	2 044	2 030	2 011	1 981	1 944	1 906	1 868	1 832	1 802	1 776
Other mineral fuels	1 146	1 146	1 159	1 188	1 226	1 265	1 290	1 298	1 300	1 283
Metals (excl. non-monetary gold)	1 036	1 078	1 119	1 154	1 176	1 184	1 189	1 199	1 212	1 227
Machinery	686	693	698	701	702	699	694	686	678	670
Transport equipment	422	417	407	396	387	383	387	392	396	399
Other manufactures	1 261	1 257	1 259	1 270	1 287	1 305	1 319	1 328	1 334	1 330
Other non-rural (incl. sugar and beverages)	1 046	1 070	1 092	1 116	1 140	1 162	1 183	1 201	1 215	1 226
<i>Other goods</i>	1 097	1 163	1 197	1 193	1 152	1 083	1 019	975	949	923
Goods for processing	55	69	73	67	55	41	31	25	21	20
Repairs on goods	5	5	6	6	7	7	7	7	7	6
Goods procured in ports by carriers	128	132	132	130	125	121	116	113	110	109
Non-monetary gold	908	957	986	990	965	915	865	831	811	788

(a) For all time periods, estimates for sugar, sugar preparations and honey are included in Other non-rural.

(b) A trend break of \$150m has been applied to Metal ores and minerals and related aggregates in April 2006.

GOODS DEBITS (a): Trend Estimates

	Mar 2006	Apr 2006	May 2006	Jun 2006	Jul 2006	Aug 2006	Sep 2006	Oct 2006	Nov 2006	Dec 2006
	\$m	\$m	\$m	\$m	\$m	\$m	\$m	\$m	\$m	\$m
Total goods debits	-14 670	-14 809	-14 906	-14 964	-14 979	-14 986	-15 032	-15 129	-15 236	-15 362
<i>Consumption goods</i>	-4 274	-4 301	-4 334	-4 376	-4 415	-4 453	-4 500	-4 554	-4 605	-4 648
Food and beverages, mainly for consumption	-526	-531	-536	-542	-550	-563	-578	-595	-611	-626
Household electrical items	-382	-382	-378	-377	-378	-383	-390	-396	-402	-405
Non-industrial transport equipment	-1 112	-1 129	-1 151	-1 174	-1 194	-1 211	-1 229	-1 248	-1 266	-1 281
Textiles, clothing and footwear	-546	-548	-551	-556	-560	-563	-566	-570	-575	-579
Toys, books and leisure goods	-353	-356	-355	-353	-350	-348	-347	-348	-349	-351
Consumption goods n.e.s.	-1 353	-1 356	-1 363	-1 374	-1 382	-1 387	-1 391	-1 396	-1 402	-1 406
<i>Capital goods</i>	-3 450	-3 389	-3 336	-3 293	-3 269	-3 272	-3 308	-3 363	-3 420	-3 479
Machinery and industrial equipment	-1 244	-1 254	-1 252	-1 247	-1 244	-1 248	-1 261	-1 276	-1 290	-1 297
ADP equipment	-518	-510	-506	-509	-520	-535	-552	-566	-579	-587
Telecommunications equipment	-498	-484	-465	-448	-439	-438	-441	-446	-452	-457
Civil aircraft	-217	-175	-160	-154	-147	-135	-123	-118	-118	-128
Industrial transport equipment n.e.s.	-474	-460	-441	-424	-421	-436	-465	-495	-521	-543
Capital goods n.e.s.	-499	-506	-512	-510	-498	-480	-467	-462	-460	-467
<i>Intermediate and other merchandise goods</i>	-6 265	-6 385	-6 482	-6 546	-6 573	-6 578	-6 578	-6 592	-6 612	-6 648
Food and beverages, mainly for industry	-52	-53	-55	-57	-60	-65	-70	-77	-83	-88
Primary industrial supplies n.e.s.	-104	-108	-111	-114	-118	-123	-128	-132	-136	-136
Fuels and lubricants	-1 923	-2 003	-2 048	-2 038	-1 978	-1 895	-1 815	-1 755	-1 715	-1 710
Parts for transport equipment	-626	-633	-643	-655	-667	-679	-689	-696	-700	-704
Parts for ADP equipment	-161	-160	-160	-159	-159	-159	-159	-158	-158	-157
Other parts for capital goods	-871	-878	-884	-891	-900	-911	-924	-938	-952	-962
Organic and inorganic chemicals	-343	-342	-337	-339	-349	-366	-384	-398	-407	-411
Paper and paperboard	-192	-194	-197	-199	-200	-199	-196	-194	-192	-189
Textile yarn and fabrics	-116	-115	-115	-115	-116	-116	-116	-116	-116	-116
Iron and steel	-250	-247	-245	-250	-261	-279	-299	-317	-332	-341
Plastics	-210	-213	-218	-225	-232	-238	-242	-246	-250	-252
Processed industrial supplies n.e.s.	-1 330	-1 341	-1 360	-1 388	-1 414	-1 432	-1 443	-1 452	-1 460	-1 466
Other merchandise goods	-87	-98	-110	-117	-118	-116	-112	-112	-113	-116
<i>Other goods</i>	-682	-733	-754	-750	-723	-683	-646	-621	-599	-588
Goods for processing	-59	-73	-82	-82	-72	-56	-41	-31	-25	-28
Repairs on goods	-7	-7	-9	-11	-13	-14	-14	-13	-12	-11
Goods procured in ports by carriers	-117	-120	-125	-131	-137	-143	-149	-155	-160	-164
Non-monetary gold	-499	-533	-537	-526	-502	-470	-442	-423	-403	-386

(a) For sign conventions, see paragraph 9 of the Explanatory Notes.

SERVICES (a)(b), Summary: Original

							6 MONTHS ENDED DECEMBER		Change
	2003-04	2004-05	2005-06	Oct 2006	Nov 2006	Dec 2006	2005	2006	
	\$m	\$m	\$m	\$m	\$m	\$m	\$m	\$m	
Services credits	37 746	39 695	41 900	3 920	3 834	3 778	20 731	22 639	9.2
<i>Transportation services</i>	7 530	8 002	8 208	722	728	764	4 119	4 305	4.5
Freight	758	704	608	54	54	54	291	323	11.0
Passenger and other	6 772	7 298	7 600	668	674	710	3 828	3 982	4.0
<i>Travel services</i>	20 099	21 440	22 692	2 169	2 077	1 977	11 223	12 302	9.6
<i>Other services</i>	10 117	10 253	11 000	1 029	1 029	1 037	5 389	6 032	11.9
Services debits	-35 696	-39 315	-41 078	-3 861	-3 568	-3 863	-20 723	-22 450	8.3
<i>Transportation services</i>	-11 970	-13 796	-14 508	-1 370	-1 334	-1 351	-7 371	-7 909	7.3
Freight	-6 056	-7 500	-7 776	-758	-740	-670	-3 927	-4 134	5.3
Passenger and other	-5 914	-6 296	-6 732	-612	-594	-681	-3 444	-3 775	9.6
<i>Travel services</i>	-12 527	-14 507	-15 090	-1 413	-1 156	-1 417	-7 718	-8 223	6.5
<i>Other services</i>	-11 199	-11 012	-11 480	-1 078	-1 078	-1 095	-5 634	-6 318	12.1
Memorandum items:									
Tourism related service credits(c)	24 072	25 584	26 796	2 529	2 443	2 378	13 354	14 419	8.0
Tourism related service debits(c)	-17 985	-20 287	-21 374	-1 986	-1 711	-2 061	-10 942	-11 772	7.6

(a) For sign conventions, see paragraph 9 of the Explanatory Notes.
(b) For more detailed trade in services by commodity, see table 11.

(c) For a more detailed explanation of tourism related services, see paragraphs 15 and 16 of the Explanatory Notes.

SERVICES (a), Summary: Seasonally Adjusted and Trend Estimates

	Mar 2006	Apr 2006	May 2006	Jun 2006	Jul 2006	Aug 2006	Sep 2006	Oct 2006	Nov 2006	Dec 2006
	\$m	\$m	\$m	\$m	\$m	\$m	\$m	\$m	\$m	\$m
SEASONALLY ADJUSTED										
Services credits	3 543	3 620	3 618	3 614	3 680	3 705	3 745	3 775	3 761	3 780
Transportation services	693	697	694	684	701	702	709	716	710	712
Freight	52	55	54	54	53	54	55	54	53	53
Passenger and other	641	641	640	630	647	648	654	663	658	659
Travel services	1 911	1 964	1 965	1 968	1 987	2 007	2 037	2 068	2 056	2 070
Other services(b)	940	959	958	962	992	996	999	991	995	997
Services debits	-3 428	-3 475	-3 513	-3 577	-3 558	-3 582	-3 613	-3 717	-3 682	-3 690
Transportation services	-1 260	-1 165	-1 200	-1 256	-1 228	-1 252	-1 257	-1 346	-1 324	-1 309
Freight	-644	-650	-620	-660	-652	-663	-652	-721	-688	-679
Passenger and other	-616	-515	-580	-596	-576	-589	-605	-625	-636	-631
Travel services	-1 181	-1 316	-1 308	-1 313	-1 303	-1 298	-1 319	-1 332	-1 318	-1 334
Other services(b)	-987	-994	-1 005	-1 007	-1 027	-1 032	-1 037	-1 038	-1 041	-1 046
Memorandum items:										
Tourism related service credits(c)	2 254	2 303	2 296	2 303	2 332	2 339	2 370	2 437	2 405	2 411
Tourism related service debits(c)	-1 786	-1 795	-1 804	-1 933	-1 814	-1 829	-1 899	-1 902	-1 917	-1 973

TREND ESTIMATES										
Services credits	3 556	3 588	3 618	3 647	3 676	3 705	3 732	3 755	3 774	3 788
Transportation services	691	693	694	695	699	703	707	710	713	715
Freight	53	54	54	54	54	54	54	54	53	53
Passenger and other	639	639	640	641	644	649	653	657	660	662
Travel services	1 921	1 942	1 960	1 978	1 995	2 013	2 031	2 048	2 063	2 074
Other services	943	953	964	974	983	989	994	997	998	999
Services debits	-3 507	-3 518	-3 528	-3 545	-3 570	-3 601	-3 632	-3 661	-3 684	-3 701
Transportation services	-1 225	-1 218	-1 216	-1 222	-1 239	-1 260	-1 282	-1 301	-1 316	-1 326
Freight	-662	-651	-644	-645	-653	-664	-675	-683	-689	-692
Passenger and other	-563	-567	-571	-577	-586	-596	-608	-618	-626	-634
Travel services	-1 293	-1 302	-1 307	-1 309	-1 310	-1 312	-1 315	-1 320	-1 325	-1 330
Other services	-989	-997	-1 006	-1 014	-1 022	-1 029	-1 035	-1 039	-1 043	-1 046
Memorandum items:										
Tourism related service credits(c)	2 259	2 280	2 297	2 314	2 333	2 354	2 375	2 395	2 412	2 424
Tourism related service debits(c)	-1 782	-1 792	-1 801	-1 812	-1 828	-1 850	-1 875	-1 902	-1 927	-1 949

(a) For sign conventions, see paragraph 9 of the Explanatory Notes.

(b) In using these seasonally adjusted series, care should be exercised because of the difficulties associated with reliably estimating the seasonal pattern.

(c) For a more detailed explanation of tourism related services, see paragraphs 15 and 16 of the Explanatory Notes.

	CREDITS				DEBITS			
	Mar Qtr	Jun Qtr	Sep Qtr	Dec Qtr	Mar Qtr	Jun Qtr	Sep Qtr	Dec Qtr
	2006	2006	2006	2006	2006	2006	2006	2006
	\$m	\$m	\$m	\$m	\$m	\$m	\$m	\$m
Services	10 717	10 452	11 107	11 532	-10 003	-10 352	-11 158	-11 292
Transportation services	2 126	1 963	2 091	2 214	-3 520	-3 617	-3 854	-4 055
Passenger(c)	1 978	1 794	1 930	2 052	-1 349	-1 544	-1 683	-1 680
Freight	148	169	161	162	-1 964	-1 885	-1 966	-2 168
Other(c)	np	np	np	np	-207	-188	-205	-207
Travel services	5 873	5 596	6 079	6 223	-3 590	-3 782	-4 237	-3 986
Business	537	540	615	583	-674	-644	-678	-650
Personal	5 336	5 056	5 464	5 640	-2 916	-3 138	-3 559	-3 336
Education-related	2 439	2 660	2 899	2 526	-194	-154	-265	-154
Other	2 897	2 396	2 565	3 114	-2 722	-2 984	-3 294	-3 182
Communication services(d)	211	193	257	210	-205	-202	-251	-214
Construction services	34	31	31	35	—	—	—	—
Insurance services	176	176	176	176	-225	-225	-225	-225
Financial services	251	251	251	251	-150	-150	-150	-150
Computer and information services	287	320	348	388	-247	-285	-331	-360
Royalties and license fees	178	219	208	247	-657	-679	-744	-830
Other business services	1 150	1 320	1 300	1 417	-833	-934	-948	-1 052
Merchanting and other trade-related	174	204	180	196	-40	-40	-59	-63
Operational leasing	9	10	10	7	-211	-199	-212	-210
Miscellaneous business, professional and technical	967	1 106	1 110	1 214	-582	-695	-677	-779
Legal, accounting, management consulting and public relations	162	179	193	206	-58	-98	-83	-84
Advertising, market research and public opinion polling	56	67	56	64	-42	-76	-39	-53
Research and development	86	104	127	140	-51	-44	-38	-51
Architectural, engineering and other technical services	305	322	293	334	-112	-120	-135	-135
Agriculture, mining and on-site processing	51	69	82	77	-35	-52	-34	-23
Services between affiliated enterprises n.i.e.	217	265	237	265	-170	-193	-225	-299
Other	90	100	122	128	-114	-112	-123	-134
Personal, cultural, and recreational services	211	155	152	170	-385	-252	-226	-207
Audiovisual and related services	94	34	36	47	-309	-212	-191	-165
Personal, cultural and recreational services	117	121	116	123	-76	-40	-35	-42
Government services n.i.e.	220	228	214	201	-191	-226	-192	-213
Memorandum items:								
Tourism related services(e)	6 977	6 465	7 069	7 350	-5 034	-5 398	-6 014	-5 758

— nil or rounded to zero (including null cells)

np not available for publication but included in totals where applicable, unless otherwise indicated

(a) For sign conventions, see paragraph 9 of the Explanatory Notes.

(b) For more information see paragraphs 13 and 14 of the Explanatory Notes.

(c) Passenger transportation credits include other transportation services credits.

(d) Communications services includes other services n.i.e.

(e) For a more detailed explanation of tourism related services, see paragraphs 15 and 16 of the Explanatory Notes.

	Oct 2006	Nov 2006	Dec 2006	Per cent of total merchandise exports(a)	6 MONTHS ENDED DECEMBER	
					2005	2006
					\$m	\$m
MAJOR COMMODITIES						
011 Meat of bovine animals	460	474	468	3.2	2 351	2 673
041 Wheat	253	228	212	1.4	1 527	1 687
268 Wool and other animal hair	234	220	249	1.7	1 125	1 236
281 Iron ore and concentrates	1 445	1 279	1 377	9.4	6 414	8 010
285 Aluminium ore and concentrates	627	550	488	3.3	2 462	3 226
321 Coal, not agglomerated	1 863	1 785	1 820	12.4	12 262	11 259
333 Crude petroleum oils	699	464	787	5.4	3 399	4 116
334 Refined petroleum oils	195	291	234	1.6	1 524	1 560
343 Natural gas	445	443	399	2.7	2 065	2 649
684 Aluminium	432	485	572	3.9	2 391	3 073
781 Passenger motor vehicles	318	250	277	1.9	1 776	1 462
971 Gold, non-monetary	903	653	867	5.9	3 042	4 951
SECTION AND DIVISION OF THE SITC						
0 Food and live animals(b)						
00 Live animals other than fish, crustaceans, molluscs and aquatic invertebrates	77	81	84	0.6	446	491
01 Meat and meat preparations	670	696	674	4.6	3 451	3 839
02 Dairy products and birds' eggs	245	230	196	1.3	1 295	1 245
03 Fish (not marine mammals), crustaceans, molluscs and aquatic invertebrates, and preparations thereof(b)	68	75	121	0.8	616	600
04 Cereals and cereal preparations(b)	376	322	317	2.2	2 108	2 458
05 Vegetables and fruit	127	131	125	0.9	696	768
06 Sugars, sugar preparations and honey(b)	30	23	21	0.1	125	150
07 Coffee, tea, cocoa, spices, and manufactures thereof	19	17	23	0.2	130	122
08 Feeding stuff for animals (excl. unmilled cereals)(b)	69	66	64	0.4	404	392
09 Miscellaneous edible products and preparations	38	40	36	0.2	228	231
<i>Total Food and live animals</i>	<i>1 717</i>	<i>1 681</i>	<i>1 661</i>	<i>11.3</i>	<i>9 498</i>	<i>10 297</i>
1 Beverages and tobacco						
11 Beverages	243	262	273	1.9	1 540	1 542
12 Tobacco and tobacco manufactures	15	12	9	0.1	46	75
<i>Total Beverages and tobacco</i>	<i>258</i>	<i>274</i>	<i>282</i>	<i>1.9</i>	<i>1 586</i>	<i>1 617</i>
2 Crude materials, inedible, except fuels(b)						
21 Hides, skins and furskins, raw(b)	59	64	72	0.5	303	357
22 Oil seeds and oleaginous fruits	20	6	16	0.1	138	86
23 Crude rubber (incl. synthetic and reclaimed)	—	—	—	—	3	2
24 Cork and wood	102	104	113	0.8	510	602
25 Pulp and waste paper	13	15	18	0.1	74	87
26 Textile fibres and their wastes (not manufactured into yarn or fabric)(b)	342	311	315	2.2	1 824	1 814
27 Crude fertilisers (excl. those of Division 56) and crude minerals (excl. coal, petroleum and precious stones)	56	58	44	0.3	250	277
28 Metalliferous ores and metal scrap(b)	3 263	2 843	3 226	22.0	13 351	17 761
29 Crude animal and vegetable materials, n.e.s.	18	18	18	0.1	143	110
<i>Total Crude materials, inedible, except fuels</i>	<i>3 872</i>	<i>3 420</i>	<i>3 824</i>	<i>26.1</i>	<i>16 596</i>	<i>21 097</i>
3 Mineral fuels, lubricants and related materials						
32 Coal, coke and briquettes	1 864	1 785	1 841	12.6	12 273	11 296
33 Petroleum, petroleum products and related materials	896	756	1 024	7.0	4 932	5 686
34 Gas, natural and manufactured	568	527	467	3.2	2 576	3 214
<i>Total Mineral fuels, lubricants and related materials</i>	<i>3 327</i>	<i>3 068</i>	<i>3 332</i>	<i>22.7</i>	<i>19 782</i>	<i>20 195</i>

— nil or rounded to zero (including null cells)

(b) Excludes exports commodities subject to a confidentiality restriction. These are included in Division 98.

(a) Per cent of total merchandise exports is calculated for the most recent month.

	Oct 2006	Nov 2006	Dec 2006	Per cent of total merchandise exports(a)	6 MONTHS ENDED DECEMBER	
					2005	2006
					\$m	\$m
SECTION AND DIVISION OF THE SITC						
4	Animal and vegetable oils, fats and waxes(b)					
41	16	19	17	0.1	107	111
42	3	4	9	0.1	28	35
43	Fats and oils (processed), waxes and inedible mixtures or preparations, of animal or vegetable origin, n.e.s.					
	6	5	5	—	26	31
	<i>Total Animal and vegetable oils, fats and waxes</i>					
	25	28	31	0.2	162	177
5	Chemicals and related products, n.e.s.(b)					
51	8	8	11	0.1	55	63
52	68	70	50	0.3	251	353
53	50	50	53	0.4	323	316
54	315	354	269	1.8	1 757	1 855
55	Essential oils and resinoids and perfume materials; toilet, polishing and cleansing preparations					
	43	46	40	0.3	242	254
56	12	16	6	—	119	93
57	25	30	35	0.2	161	161
58	33	33	31	0.2	170	191
59	72	67	65	0.4	352	398
	<i>Total Chemicals and related products, n.e.s.</i>					
	625	674	561	3.8	3 431	3 683
6	Manufactured goods classified chiefly by material(b)					
61	34	30	38	0.3	199	212
62	15	17	21	0.1	86	108
63	14	13	14	0.1	112	90
64	Paper, paperboard, and articles of paper pulp, of paper or of paperboard					
	58	59	52	0.4	331	357
65	36	35	36	0.2	233	220
66	72	93	72	0.5	464	485
67	72	84	127	0.9	383	513
68	1 139	1 101	1 206	8.2	4 515	6 613
69	76	101	92	0.6	457	514
	<i>Total Manufactured goods classified chiefly by material</i>					
	1 517	1 532	1 658	11.3	6 781	9 113
7	Machinery and transport equipment(b)					
71	92	99	133	0.9	645	679
72	130	113	143	1.0	789	787
73	17	13	17	0.1	102	89
74	General industrial machinery and equipment, n.e.s. and machine parts, n.e.s.(b)					
	146	124	142	1.0	817	831
75	98	106	106	0.7	593	590
76	Telecommunications and sound recording and reproducing apparatus and equipment					
	66	67	77	0.5	429	460
77	Electrical machinery, apparatus, appliances, parts (incl. non-electrical counterparts of electrical domestic equipment)					
	149	153	143	1.0	805	899
78	392	335	378	2.6	2 383	1 971
79	68	79	85	0.6	541	468
	<i>Total Machinery and transport equipment</i>					
	1 157	1 089	1 223	8.4	7 104	6 774

— nil or rounded to zero (including null cells)

(a) Per cent of total merchandise exports is calculated for the most recent month.

(b) Excludes exports commodities subject to a confidentiality restriction. These are included in Division 98.

	Oct 2006	Nov 2006	Dec 2006	Per cent of total merchandise exports(a)	6 MONTHS ENDED DECEMBER.....	
					2005	2006
					\$m	\$m
SECTION AND DIVISION OF THE SITC						
8	Miscellaneous manufactured articles(b)					
81	Prefabricated buildings; sanitary, plumbing, heating and lighting fixtures and fittings, n.e.s.					
	12	8	9	0.1	61	59
82	Furniture, parts thereof; bedding, mattresses, mattress supports, cushions and similar stuffed furnishings					
	11	13	11	0.1	69	74
83	Travel goods, handbags and similar containers					
	4	3	3	—	13	15
84	Articles of apparel and clothing accessories					
	19	20	18	0.1	132	127
85	Footwear(b)					
	3	5	4	—	22	22
87	Professional, scientific and controlling instruments and apparatus, n.e.s.					
	137	158	160	1.1	801	895
88	Photographic apparatus, equipment and supplies and optical goods, n.e.s.; watches and clocks					
	34	31	29	0.2	172	183
89	Miscellaneous manufactured articles, n.e.s.					
	186	199	196	1.3	1 083	1 180
	<i>Total Miscellaneous manufactured articles</i>					
	405	438	428	2.9	2 352	2 557
9	Commodities and transactions not classified elsewhere in the SITC(c)					
93	Special transactions and commodities not classified according to kind					
	87	140	93	0.6	996	677
95	Gold coin whether or not legal tender, and other coin being legal tender					
	33	15	24	0.2	60	87
96	Coin (excl. gold coin), not being legal tender					
	—	—	—	—	1	—
97	Gold, non-monetary (excl. gold ores and concentrates)					
	903	653	867	5.9	3 042	4 951
98	Combined confidential items excl. some of SITC 280 (exports only) and some of SITCs 510 and 520 (imports only)(c)					
	709	907	664	4.5	3 202	4 589
	<i>Total commodities and transactions not classified elsewhere in the SITC</i>					
	1 732	1 715	1 648	11.2	7 300	10 303
Total merchandise exports						
	14 635	13 920	14 648	100.0	74 592	85 813
Balance of Payments Adjustments						
	129	117	116	. .	758	821
Goods Credits (exports) on a Balance of Payments Basis						
	14 764	14 037	14 764	. .	75 350	86 634

. . not applicable

— nil or rounded to zero (including null cells)

(a) Per cent of total merchandise exports is calculated for the most recent month.

(b) Excludes exports commodities subject to a confidentiality restriction. These are included in Division 98.

(c) Includes exports commodities subject to a confidentiality restriction.

	Oct 2006	Nov 2006	Dec 2006	Per cent of total merchandise imports(a)	6 MONTHS ENDED DECEMBER	
					2005	2006
					\$m	\$m
MAJOR COMMODITIES						
333 Crude petroleum oils	933	867	1 207	8.3	5 585	6 446
334 Refined petroleum oils	756	634	634	4.4	3 529	3 909
542 Medicaments	615	502	387	2.7	3 043	3 161
641 Paper and paperboard	178	181	144	1.0	1 045	1 059
752 Automatic data processing machines	617	526	554	3.8	2 942	3 276
759 Parts and accessories of office machines	180	182	173	1.2	1 076	1 125
764 Telecommunications equipment	500	612	516	3.5	2 774	3 098
781 Passenger motor vehicles	1 166	1 104	1 117	7.7	6 057	6 636
782 Motor vehicles for the transport of goods	441	408	426	2.9	2 078	2 363
784 Parts and accessories of motor vehicles	232	219	186	1.3	1 172	1 301
792 Aircraft and associated equipment	199	167	325	2.2	2 310	1 410
971 Gold, non-monetary	647	324	349	2.4	1 499	2 484
SECTION AND DIVISION OF THE SITC						
0 Food and live animals						
00 Live animals other than fish, crustaceans, molluscs and aquatic invertebrates	6	9	9	0.1	41	56
01 Meat and meat preparations	35	44	46	0.3	146	203
02 Dairy products and birds' eggs	38	46	38	0.3	205	225
03 Fish (not marine mammals), crustaceans, molluscs and aquatic invertebrates, and preparations thereof	117	127	125	0.9	532	633
04 Cereals and cereal preparations	53	51	43	0.3	241	295
05 Vegetables and fruit	116	134	134	0.9	607	690
06 Sugars, sugar preparations and honey	18	19	16	0.1	102	107
07 Coffee, tea, cocoa, spices, and manufactures thereof	74	81	73	0.5	398	451
08 Feeding stuff for animals (excl. unmilled cereals)	38	35	26	0.2	159	192
09 Miscellaneous edible products and preparations	109	149	94	0.6	603	632
<i>Total food and live animals</i>	602	695	606	4.2	3 033	3 484
1 Beverages and tobacco						
11 Beverages	118	139	97	0.7	503	639
12 Tobacco and tobacco manufactures	14	17	24	0.2	94	109
<i>Total beverages and tobacco</i>	132	157	121	0.8	596	748
2 Crude materials, inedible, except fuels						
21 Hides, skins and furskins, raw	—	—	—	—	1	1
22 Oil seeds and oleaginous fruits	9	5	33	0.2	27	66
23 Crude rubber (incl. synthetic and reclaimed)	19	20	11	0.1	78	93
24 Cork and wood	45	47	44	0.3	283	280
25 Pulp and waste paper	31	17	22	0.2	121	136
26 Textile fibres and their wastes (not manufactured into yarn or fabric)	13	15	11	0.1	72	78
27 Crude fertilisers (excl. those of Division 56) and crude minerals (excl. coal, petroleum and precious stones)	13	18	16	0.1	86	83
28 Metalliferous ores and metal scrap	98	43	59	0.4	182	356
29 Crude animal and vegetable materials, n.e.s.	25	31	29	0.2	130	149
<i>Total crude materials, inedible, except fuels</i>	253	196	224	1.5	979	1 243
3 Mineral fuels, lubricants and related materials(b)						
32 Coal, coke and briquettes	3	2	1	—	14	12
33 Petroleum, petroleum products and related materials(b)	1 735	1 525	1 883	12.9	9 310	10 552
34 Gas, natural and manufactured	92	81	94	0.6	84	538
<i>Total mineral fuels, lubricants and related materials</i>	1 831	1 607	1 978	13.6	9 408	11 102

— nil or rounded to zero (including null cells)

(b) Excludes imports commodities subject to a confidentiality restriction. These are included in Division 98.

(a) Per cent of total merchandise imports is calculated for the most recent month.

				Per cent of total merchandise imports(a)	6 MONTHS ENDED DECEMBER	
	Oct	Nov	Dec		
	2006	2006	2006		2005	2006
	\$m	\$m	\$m	%	\$m	\$m
SECTION AND DIVISION OF THE SITC						
4	Animal and vegetable oils, fats and waxes					
41	Animal oils and fats	2	1	2	—	11 12
42	Fixed vegetable fats and oils, crude, refined or fractionated	39	41	33	0.2	156 224
43	Fats and oils (processed), waxes and inedible mixtures or preparations, of animal or vegetable origin, n.e.s.	4	5	5	—	23 31
	<i>Total animal and vegetable oils, fats and waxes</i>	45	47	40	0.3	190 266
5	Chemicals and related products, n.e.s.(b)					
51	Organic chemicals	287	382	185	1.3	1 452 1 587
52	Inorganic chemicals(b)	92	110	86	0.6	545 563
53	Dyeing, tanning and colouring materials	54	56	48	0.3	282 311
54	Medicinal and pharmaceutical products	712	592	469	3.2	3 685 3 754
55	Essential oils and resinoids and perfume materials; toilet, polishing and cleansing preparations	144	137	114	0.8	778 824
56	Fertilisers (excl. crude)	41	22	11	0.1	333 217
57	Plastics in primary forms	139	148	138	0.9	672 820
58	Plastics in non-primary forms	117	121	106	0.7	575 657
59	Chemical materials and products, n.e.s.	150	160	137	0.9	802 885
	<i>Total chemicals and related products, n.e.s.</i>	1 735	1 729	1 294	8.9	9 123 9 617
6	Manufactured goods classified chiefly by material(b)					
61	Leather, leather manufactures, and dressed furskins, n.e.s.	10	15	13	0.1	73 71
62	Rubber manufactures, n.e.s.(b)	210	227	199	1.4	962 1 245
63	Cork and wood manufactures (excl. furniture)	54	53	51	0.4	276 308
64	Paper, paperboard, and articles of paper pulp, of paper or of paperboard(b)	237	237	197	1.4	1 342 1 389
65	Textile yarn, fabrics, made-up articles n.e.s. and related products	221	227	183	1.3	1 193 1 278
66	Non-metallic mineral manufactures, n.e.s.	217	202	177	1.2	1 114 1 183
67	Iron and steel(b)	343	356	274	1.9	1 723 1 781
68	Non-ferrous metals(b)	131	133	132	0.9	586 836
69	Manufactures of metals, n.e.s.(b)	422	431	377	2.6	2 134 2 339
	<i>Total manufactured goods classified chiefly by material</i>	1 844	1 880	1 603	11.0	9 404 10 431
7	Machinery and transport equipment(b)					
71	Power generating machinery and equipment	336	408	278	1.9	1 704 1 953
72	Machinery specialised for particular industries	601	515	610	4.2	3 237 3 495
73	Metal working machinery	54	62	55	0.4	513 357
74	General industrial machinery and equipment, n.e.s. and machine parts, n.e.s.	1 003	966	848	5.8	4 450 5 159
75	Office machines and automatic data processing machines	866	774	775	5.3	4 319 4 744
76	Telecommunications and sound recording and reproducing apparatus and equipment	1 009	1 096	825	5.7	4 961 5 438
77	Electrical machinery, apparatus, appliances, parts (incl. non-electrical counterparts of electrical domestic equipment)(b)	791	808	708	4.9	4 082 4 479
78	Road vehicles (incl. air-cushion vehicles)	2 036	1 932	1 904	13.1	10 300 11 350
79	Transport equipment (excl. road vehicles)	258	327	413	2.8	2 962 1 882
	<i>Total machinery and transport equipment</i>	6 954	6 888	6 417	44.1	36 527 38 858

— nil or rounded to zero (including null cells)

(a) Per cent of total merchandise imports is calculated for the most recent month.

(b) Excludes imports commodities subject to a confidentiality restriction. These are included in Division 98.

				Per cent of total merchandise imports(a)	6 MONTHS ENDED DECEMBER	
	Oct	Nov	Dec		
	2006	2006	2006		2005	2006
	\$m	\$m	\$m	%	\$m	\$m
SECTION AND DIVISION OF THE SITC						
8	Miscellaneous manufactured articles(b)					
81	Prefabricated buildings; sanitary, plumbing, heating and lighting fixtures and fittings, n.e.s.					
	64	60	49	0.3	277	338
82	Furniture, parts thereof; bedding, mattresses, mattress supports, cushions and similar stuffed furnishings					
	224	233	218	1.5	1 143	1 293
83	Travel goods, handbags and similar containers					
	66	65	49	0.3	331	342
84	Articles of apparel and clothing accessories					
	402	362	292	2.0	2 131	2 244
85	Footwear					
	100	101	89	0.6	565	631
87	Professional, scientific and controlling instruments and apparatus, n.e.s.					
	368	353	345	2.4	1 907	2 100
88	Photographic apparatus, equipment and supplies and optical goods, n.e.s.; watches and clocks(b)					
	134	134	117	0.8	720	723
89	Miscellaneous manufactured articles, n.e.s.					
	917	879	748	5.1	4 633	4 990
	<i>Total miscellaneous manufactured articles</i>					
	2 276	2 187	1 906	13.1	11 708	12 662
9	Commodities and transactions not classified elsewhere in the SITC(c)					
93	Special transactions and commodities not classified according to kind					
	4	3	5	—	15	20
95	Gold coin whether or not legal tender, and other coin being legal tender					
	—	—	1	—	1	2
96	Coin (excl. gold coin), not being legal tender					
	—	—	—	—	—	—
97	Gold, non-monetary (excl. gold ores and concentrates)					
	647	324	349	2.4	1 499	2 484
98	Combined confidential items excl. some of SITC 280 (exports only) and some of SITCs 510 and 520 (imports only)(c)					
	18	19	18	0.1	59	86
	<i>Total commodities and transactions not classified elsewhere in the SITC</i>					
	669	346	374	2.6	1 575	2 592
	Total merchandise imports					
	16 342	15 733	14 562	100.0	82 544	91 003
	Balance of Payments Adjustment					
	341	212	217	. .	1 322	1 504
	Goods Debits (imports) on a Balance of Payments Basis					
	16 683	15 945	14 779	. .	83 866	92 507

. . not applicable

— nil or rounded to zero (including null cells)

(a) Per cent of total merchandise imports is calculated for the most recent month.

(b) Excludes imports commodities subject to a confidentiality restriction. These are included in Division 98.

(c) Includes imports commodities subject to a confidentiality restriction.

	EXPORTS				IMPORTS				BALANCE OF MERCHANDISE TRADE	
	2005-06	December	6 months ended	6 months ended	2005-06	December	6 months ended	6 months ended	2005-06	6 months ended
		2006	December 2005	December 2006		2006	December 2005	December 2006		December 2006
	\$m	\$m	\$m	\$m	\$m	\$m	\$m	\$m	\$m	\$m
Belgium	1 040	108	519	569	1 479	116	727	791	-438	-222
Brazil	947	64	512	456	784	74	397	451	163	5
Canada	1 698	119	873	854	1 993	193	890	1 093	-295	-239
China	18 140	2 139	9 008	11 283	23 202	2 172	11 996	14 281	-5 062	-2 997
Denmark	200	16	100	104	891	85	437	576	-691	-472
Egypt(b)	504	32	227	141	16	1	8	9	488	132
Fiji	460	36	231	221	175	13	100	91	285	130
Finland	934	269	348	807	818	61	420	401	116	406
France	1 184	115	604	672	5 347	302	3 071	1 851	-4 163	-1 179
Germany	1 418	152	737	738	8 677	834	4 407	4 722	-7 259	-3 984
Hong Kong (Sar of China)	2 897	287	1 339	1 590	1 651	112	787	788	1 246	803
India	7 382	733	3 570	5 032	1 240	98	629	670	6 142	4 362
Indonesia	3 982	369	1 917	2 353	4 553	509	2 039	2 030	-572	323
Iran	348	6	97	84	37	4	20	23	311	61
Iraq	171	—	144	94	—	16	—	36	171	58
Ireland	157	13	86	89	1 852	123	996	980	-1 695	-891
Israel	158	11	69	96	615	47	276	306	-456	-210
Italy	1 559	159	707	976	4 186	436	2 174	2 474	-2 627	-1 498
Japan	31 082	2 735	15 487	16 796	17 334	1 296	8 793	8 729	13 749	8 067
Korea, Republic of	11 753	1 202	6 003	6 585	6 484	468	2 746	3 168	5 269	3 417
Kuwait	515	54	264	273	242	14	135	105	273	168
Malaysia	2 535	258	1 222	1 534	6 751	612	3 180	3 134	-4 216	-1 600
Mexico	835	60	453	464	938	77	446	558	-102	-94
Netherlands	2 579	264	1 229	1 485	1 314	113	664	749	1 265	736
New Zealand	8 747	734	4 744	4 946	5 481	445	2 817	2 834	3 266	2 112
Pakistan	318	21	168	166	147	12	68	72	171	94
Papua New Guinea	1 396	188	661	768	2 318	209	1 123	1 106	-922	-338
Philippines	878	89	463	581	806	50	422	373	72	208
Saudi Arabia	2 179	199	1 060	1 082	1 209	106	484	490	970	592
Singapore	4 203	466	2 237	2 625	10 538	846	4 834	5 044	-6 335	-2 420
South Africa	2 208	181	1 042	1 120	1 618	126	826	787	589	333
Spain	892	68	440	688	1 317	119	672	735	-426	-48
Sweden	422	15	268	209	2 395	179	1 027	1 138	-1 973	-929
Switzerland	260	36	112	236	1 571	167	779	1 020	-1 311	-784
Taiwan	5 909	598	2 832	3 221	3 811	348	1 916	2 223	2 098	998
Thailand	4 230	322	1 953	1 996	5 388	566	2 603	3 473	-1 158	-1 477
Turkey	385	78	202	234	354	34	174	229	31	4
United Arab Emirates	1 647	190	658	969	667	76	205	856	980	113
United Kingdom	7 792	611	3 088	3 411	5 968	446	3 270	3 528	1 824	-117
United States of America	9 785	819	4 757	5 064	22 762	2 063	10 923	12 531	-12 977	-7 467
Viet Nam	915	103	320	992	4 134	384	1 828	2 660	-3 220	-1 668
Other Countries	7 849	730	3 840	4 209	6 440	615	3 235	3 888	1 408	321
Total	152 492	14 648	74 592	85 813	167 503	14 562	82 544	91 003	-15 011	-5 190
APEC	109 798	10 578	54 590	62 167	120 080	10 481	58 262	65 142	-10 282	-2 976
ASEAN	16 869	1 621	8 178	10 151	33 242	3 025	15 384	17 311	-16 374	-7 160
Developing Countries	75 895	7 749	37 243	44 471	77 265	6 916	37 008	43 010	-1 370	1 461
Least Developed Countries	1 537	152	802	844	341	25	166	132	1 197	712
European Union(c)	18 693	1 813	8 371	9 937	36 259	3 037	18 961	19 156	-17 566	-9 218
OECD	83 166	7 599	41 002	45 133	93 778	7 835	46 829	49 645	-10 613	-4 512

— nil or rounded to zero (including null cells)

(a) See Time series spreadsheets for details of all countries.

(b) Exports of Alumina to Egypt are excluded from country total and included in the 'Other Countries' category.

(c) From July 2004, European Union includes 25 member countries.

	December		6 MONTHS ENDED DECEMBER	
	2005-06	2006	2005	2006
	\$m	\$m	\$m	\$m
EXPONENTS (a)				
New South Wales	26 840	2 468	13 236	14 344
Victoria	18 929	1 748	9 458	10 549
Queensland	35 385	3 010	17 515	18 506
South Australia	9 026	755	4 457	4 406
Western Australia	47 939	5 386	23 335	30 241
Tasmania	2 893	344	1 377	1 809
Northern Territory	2 644	333	1 211	2 183
Australian Capital Territory	9	—	7	6
State not available for publication(b)	710	83	345	421
Re-exports	8 118	519	3 650	3 348
Total exports	152 492	14 648	74 592	85 813
IMPORTS				
New South Wales	64 885	5 680	32 464	35 693
Victoria	49 010	4 117	25 220	26 012
Queensland	24 863	2 148	12 144	13 734
South Australia	6 243	503	3 198	3 221
Western Australia	19 095	1 647	7 848	10 415
Tasmania	516	45	272	347
Northern Territory	2 888	218	1 395	1 373
Australian Capital Territory	4	206	3	207
Total imports	167 503	14 562	82 544	91 003

— nil or rounded to zero (including null cells)

(a) State in which the final stage of production or manufacture occurs.

(b) Exports of Alumina to Bahrain, Egypt and Iceland are excluded from the state totals and included in 'State not available for publication category'.

PERIOD AVERAGE EXCHANGE RATES (a): Per Australian dollar

<i>Period</i>	<i>United States dollar</i>	<i>UK pound sterling</i>	<i>Euro</i>	<i>Japanese yen</i>	<i>Trade-weighted index of value of the \$A(b)</i>
FINANCIAL YEAR					
2003-04	0.7137	0.4102	0.5981	78.91	61.49
2004-05	0.7529	0.4052	0.5918	80.45	62.73
2005-06	0.7474	0.4205	0.6143	85.90	63.26
MONTHS					
2005					
October	0.7539	0.4275	0.6269	86.57	64.30
November	0.7355	0.4236	0.6234	87.04	63.40
December	0.7430	0.4252	0.6265	88.20	63.70
2006					
January	0.7498	0.4248	0.6189	86.55	63.30
February	0.7416	0.4239	0.6203	87.42	62.90
March	0.7277	0.4170	0.6053	85.35	61.80
April	0.7350	0.4165	0.5993	86.09	62.00
May	0.7633	0.4089	0.5982	85.33	63.20
June	0.7402	0.4012	0.5842	84.80	62.00
July	0.7514	0.4075	0.5920	86.89	63.00
August	0.7630	0.4034	0.5958	88.45	63.70
September	0.7566	0.4009	0.5938	88.58	63.20
October	0.7539	0.4021	0.5975	89.46	63.20
November	0.7721	0.4040	0.5995	90.52	64.00
December	0.7861	0.4002	0.5949	92.05	64.40

- (a) These exchange rates and the trade-weighted index are derived using rates provided by the Reserve Bank of Australia in respect of each trading day.
- (b) May 1970 = 100. The Trade-weighted index is reweighted annually on 1 October and on special occasions as required.

EXPLANATORY NOTES

INTRODUCTION

1 This publication presents preliminary estimates of Australia's international trade in goods and services on a balance of payments basis and merchandise import and export statistics on a recorded trade basis.

2 Merchandise trade statistics on a recorded trade basis are compiled from information submitted by exporters and importers or their agents to the Australian Customs Service (ACS). Adjustments for coverage, timing and valuation are made to recorded trade data to convert them to a balance of payments basis. The main source for services data is the quarterly Survey of International Trade in Services.

3 More comprehensive quarterly estimates of Australia's trade in goods and services, together with comprehensive details of Australia's balance of payments are included in the quarterly publication, *Balance of Payments and International Investment Position, Australia* (cat. no. 5302.0). Detailed monthly statistics on merchandise trade are available on Time Series Spreadsheets or by subscription to tailored services.

CONCEPTS, SOURCES AND METHODS

4 The conceptual framework used in compiling Australia's merchandise trade statistics can be found in *International Merchandise Trade, Australia: Concepts, Sources and Methods, 2001* (cat. no. 5489.0).

5 The conceptual framework used in compiling Australia's balance of payments statistics is based on the Fifth Edition of the International Monetary Fund's *Balance of Payments Manual* (BPM5, 1993). Descriptions of the underlying concepts and structure of the balance of payments and the sources, methods and terms used in compiling the estimates are presented in *Balance of Payments and International Investment Position, Australia: Concepts, Sources and Methods, 1998* (cat. no. 5331.0). To bring merchandise trade statistics on a recorded trade basis to a balance of payments basis, timing adjustments are made to ensure that the transaction is recorded in the period in which ownership changed, rather than in the period in which the transaction was recorded by ACS. Adjustments are also made to imports to take account of distortions which arise when significant changes occur in the volume of import entries lodged but not yet processed by ACS in a given month. Chapter 6 of cat. no. 5331.0 provides more detail on the relationship between statistics on international merchandise trade on a recorded trade basis and on a balance of payments basis.

6 Both of the Concepts, Sources and Methods publications are available to download for free from the ABS website. Select *Methods, Classifications, Concepts & Standards*, then choose *ABS concepts, classifications and statistical standards* and then the catalogue numbers as above.

SEASONAL ADJUSTMENT

7 Monthly original estimates are volatile, being subject to calendar-related and large irregular influences. Seasonally adjusted estimates are derived by estimating and removing systematic calendar related effects, such as seasonal and trading day influences, from the original series. Trading day effects are removed from the original estimates prior to the seasonal adjustment process. Seasonal adjustment does not aim to remove the irregular or non-seasonal influences which may be present in any particular month. These irregular influences may reflect both random economic events and difficulties of statistical recording. The estimates of international trade in goods and services on a balance of payments basis are seasonally adjusted. The merchandise exports and imports statistics on a recorded trade basis are not.

TREND ESTIMATES

8 The month-to-month movements of the seasonally adjusted estimates may not be reliable indicators of trend behaviour because they include irregular or non-seasonal movements. Trend estimates are derived by applying a 13-term Henderson moving average to the seasonally adjusted series. The use of a 13-term Henderson average can result in revisions to the estimates for the most recent six months as additional

EXPLANATORY NOTES *continued*

- TREND ESTIMATES *continued* observations become available. Revisions can also occur because of changes in the original data and as a result of the annual re-estimation of the seasonal factors.
- SIGN CONVENTION **9** In keeping with balance of payments conventions, where statistics are on a balance of payments basis, credit entries (exports) are shown without sign and debit items (imports) are shown as negative entries. For statistics on a recorded trade basis, both imports and exports are shown without sign. The calculation of percentage changes on balance of payments debit items are made without regard to sign. References to balance of payments debit items in Key Figures, Key Points, and Analysis and Comments are also made without regard to sign.
- COMMODITY BREAKDOWNS OF GOODS **10** For details of the classification used for goods exports on a balance of payments basis (credits), see table 6.6 in *Balance of Payments and International Investment Position, Australia: Concepts, Sources and Methods, 1998* (cat. no. 5331.0). **11** Details of the classification of goods imports on a balance of payments basis (debits) are provided in table 6.7 in cat. no. 5331.0. Goods debits sub groups at a more detailed level than shown in Table 4 are available from the Time series spreadsheets. **12** The recorded trade statistics shown in tables 12 and 13 are classified by the Standard International Trade Classification 2 (SITC). The first section of tables 12 and 13 show the most significant commodities (by value) at the SITC 3 digit level.
- COMMODITY BREAKDOWNS OF SERVICES **13** The quarterly detailed services data published in table 11 are consistent with the monthly aggregates shown in table 9. **14** Monthly indicators for many of the services components that are only surveyed quarterly are not available. In particular, the Freight and Other transportation components of Total services credits are not available for publication on a monthly basis. The estimates for these items shown in table 9 are therefore derived by dividing the quarterly estimate by three. Where quarterly survey data are not available, freight debits are derived directly from imports data for the reference month as a difference between total merchandise cost, insurance and freight (CIF) and free on board (FOB), adjusted to reflect timing and processing adjustments. For freight credits and other transportation credits and debits, estimates are derived by extrapolating the last month's data by an average of movements for the same month over the three previous years.
- TOURISM RELATED SERVICES **15** The tourism related services memorandum items provide timely indicators of the movements in tourism related activities, not an absolute measure of the level of these activities. These series are not compiled on a balance of payments conceptual basis. However, they do provide a reasonable approximation of world tourism related activities. **16** The memorandum items have been derived by re-aggregating relevant components of the international trade in services series of the balance of payments accounts. The tourism related indicator has been derived by combining total travel services (business, education-related and other personal travel), passenger fares, and the air transport component of other transportation services which relates to agency fees and commission receipts.
- SERVICES BY STATE AND BY PARTNER COUNTRY **17** Annual services data by state and by partner country are released twice yearly. Calendar year data are usually released with the March issue of this publication and financial year data are released with the September issue. Refer to Time Series Data for details. **18** Services credits are classified by the state of provision, while services debits are classified by the state of consumption. The state allocations for transportation, travel and communication services are based on a number of indicators including merchandise trade statistics by state, overseas passenger arrivals and departures by state of clearance

EXPLANATORY NOTES *continued*

SERVICES BY STATE AND BY PARTNER COUNTRY *continued*

and data provided by the Department of Education, Science and Training. The allocation for other services (about 25% of all trade in services) is primarily based on the location of the business reporting the information, which serves as a proxy for the state of provision/consumption of that service. The data should be used with care but are considered suitable for analysis over time.

19 A comprehensive explanation of the data sources used and the methodology applied in the compilation of partner country statistics is provided in Chapter 17 of *Balance of Payments and International Investment Position, Australia - Concepts, Sources and Methods* (cat. no. 5331.0). Approximately 7% of total services credits and 5% of total services debits for 2005–06 are either confidential, or unable to be allocated to individual countries.

ABS DATA AVAILABLE

20 More detailed balance of payments and recorded merchandise trade data, including forward seasons factors are available as time series spreadsheets or data cubes from the ABS website.

21 More detailed merchandise trade data by commodity, country and state, and statistics included in this and related publications are available on request. Inquiries should be made to the National Information and Referral Service as shown on the back of this publication.

RELATED PRODUCTS AND PUBLICATIONS

22 Users may also wish to refer to the following publications which can be downloaded free of charge from the ABS web site:

- *Balance of Payments and International Investment Position, Australia* (cat. no. 5302.0) – issued quarterly
- *International Merchandise Imports, Australia* (cat. no. 5439.0) – issued monthly
- *International Trade Price Indexes, Australia* (cat. no. 6457.0) – issued quarterly
- *Balance of Payments and International Investment Position, Australia: Concepts, Sources and Methods* (cat. no. 5331.0)
- *Information Paper: Quality of Australian Balance of Payments Statistics* (cat. no. 5342.0)
- *International Merchandise Trade, Australia: Concepts, Sources and Methods* (cat. no. 5489.0)
- *A Guide to Australian Balance of Payments and International Investment Position Statistics* (cat. no. 5362.0.55.001).

23 Current publications produced by the ABS are listed in the Catalogue of Publications and Products (cat. no. 1101.0). The Catalogue is available from any ABS office or from this site. The ABS also issues a daily Release Advice on the web site which details products to be released in the week ahead.

CAUTIONARY NOTE

24 The tables in this publication are presented on two bases. Tables 1–11 contain estimates of Australia's international trade in goods and services which have been adjusted for coverage, valuation and timing to a balance of payments basis. Tables 12–15 contain estimates of merchandise exports and imports based on Australian Customs Service records. Paragraph 5 of the Explanatory Notes provides an explanation of the difference between these bases.

EXPLANATORY NOTES *continued*

ABBREVIATIONS

\$b	billion (thousand million) dollars
\$m	million dollars
ABS	Australian Bureau of Statistics
APEC	Asia Pacific Economic Co-operation
ASEAN	Association of South-East Asian Nations
n.e.s.	not elsewhere specified
n.i.e.	not included elsewhere
OECD	Organisation for Economic Co-operation and Development
SAR	Special Administrative Region
SITC	Standard International Trade Classification

APPENDIX RELATED ARTICLES

<i>Article</i>	<i>Source(a)</i>	<i>Issue</i>
Investment		
Foreign ownership of equity	5302.0	Sep qtr 2006
Kangaroo bonds	5302.0	Sep qtr 2004
Gross external debt	5302.0	Sep qtr 2003
Measuring Australia's foreign currency exposure	5302.0	Dec qtr 2001
Balance of payments		
International comparison of balance of payments statistics	(b) 5363.0	1999–2000
The Sydney Olympic Games Update	5368.0	Jul 2000
The Sydney Olympic Games	5302.0	Sep qtr 1999
Merchandise trade		
Number and characteristics of Australian exporters	5368.0.55.006	2005–2006
New methodology for deriving counts of Australian exports	5368.0	Feb 2006
Export and Import Invoice Currencies, 2005	5368.0	Jun 2005
Australia's Importers, 2003–04	5368.0	Nov 2004
Australia's Exporters, 2003–04	5368.0	Oct 2004
Australia's Trade with the USA	5368.0	Mar 2004
Trade through Australia's ports	5422.0	Sep qtr 2002
Australia's trade in wine	5422.0	Dec qtr 2001
Australia's export markets, 1991–92 to 2000–01	5422.0	Jun qtr 2001
Major commodities traded by Australia, 1991 to 2000	(b) 5422.0	Dec qtr 2000
Australia's trade in crude petroleum	5422.0	Mar qtr 2000
Australia's merchandise trade with the Republic of Korea	5422.0	Sep qtr 1999
Australia's merchandise trade with Japan	5422.0	Mar qtr 1999
Bilateral merchandise trade statistics reconciliation: Australia and the European Union, 1992 to 1997	5422.0	Sep qtr 1998
Trade in services		
Changes to International Trade in Services Statistics, August 2006	5368.0	Aug 2006
International trade in services by partner country, 2005, preliminary	5368.0	Dec 2005
Changes to International trade in services travel statistics	5368.0	Aug 2005
International trade in education services	5302.0	Sep 2001
Finance		
Impact of 2003–2004 farm season on Australian production	1350.0	Oct 2003
Recent trends in construction and first home buyers finance	5609.0	Mar 2002
Household sector data in the financial accounts	5232.0	Mar qtr 2002
Investment Managers	5655.0	Jun qtr 2000
Venture capital, 1999–2000	5611.0	2000–01
Technical information		
Changes on 1 January 2007 to Statistical Codes in the AHECC and the Customs Tariff	1233.0.55.001	Nov 2006
ABS implementation in January 2007 of revisions to international trade classifications, 2007	5368.0.55.005	June 2006
Revised Treatment of Goods for Processing in Merchandise Trade and Balance of Payments Statistics	5368.0	May 2006
Impact of Customs and ABS changes on import statistics from October 2005	5439.0	Oct 2005
ABS Management of the Impact of the Implementation of the Imports Component of the New Customs System	5439.0	Aug 2005
Changes to country and port classifications	5368.0	May 2003
Implementation of New Customs Systems	5368.0	Aug 2004
The effect of customs changes on export statistics	5422.0	Jun qtr 2002
Harmonized system changes	5422.0	Sep qtr 2001
International trade review: data quality and client queries	5422.0	Jun qtr 2000
Data confidentiality	5422.0	Dec qtr 1999

(a) In the ABS web site home page, select Key Products; Papers & Articles; ABS Articles; Feature Articles by Catalogue Number.

(b) This article can be found in pdf format by referring to the Details page of the specified issue of this publication on the ABS web site and click on Download Now.

FOR MORE INFORMATION . . .

INTERNET **www.abs.gov.au** the ABS web site is the best place for data from our publications and information about the ABS.

LIBRARY A range of ABS publications are available from public and tertiary libraries Australia wide. Contact your nearest library to determine whether it has the ABS statistics you require, or visit our web site for a list of libraries.

INFORMATION AND REFERRAL SERVICE

Our consultants can help you access the full range of information published by the ABS that is available free of charge from our web site, or purchase a hard copy publication. Information tailored to your needs can also be requested as a 'user pays' service. Specialists are on hand to help you with analytical or methodological advice.

PHONE 1300 135 070

EMAIL client.services@abs.gov.au

FAX 1300 135 211

POST Client Services, ABS, GPO Box 796, Sydney NSW 2001

FREE ACCESS TO STATISTICS

All statistics on the ABS web site can be downloaded free of charge.

WEB ADDRESS www.abs.gov.au



2536800012069

ISSN 1328 2778

RRP \$26.00